

SERVICE DE SPECTROMETRIE DE MASSE DE L'ISIC (SSMI)

Dr. Laure Menin
Francisco Sepulveda
EPFL-SB-ISIC
SSMI, BCH 1524
CH-1015 Lausanne
Suisse
Phone: +41 21 693 94 64
Fax: +41 21 693 97 50
Laure.menin@epfl.ch

Pr. Yury O. Tsybin, Directeur
EPFL-SB-ISIC
LSMB, BCH 4312
CH-1015 Lausanne
Suisse
Phone: +41 21 693 97 51
Fax: +41 21 693 97 00
Yury.tsybin@epfl.ch



ANALYSES GC-MS

Le 16 Juillet 2012

Objet: Analyse d'une huile essentielle par GC-MS
Nom: **Cannelle Ecorce**
Lot: **CIN501J105986**
Destinataire : Entreprise Gedane (Lausanne, Suisse)
Composés majoritaires: **Cinnamaldehyde ; Linalool**

CONDITIONS EXPERIMENTALES

Type d'instrument : GC CP-3800 couplé au 1200L Triple quadrupole MS/MS (Varian)

Mode d'ionisation : Impact électronique (IE), 70 eV (mode positif)

Gamme de masse : m/z 50-300 en 0.5 sec

Colonne : FactorFour VF-5ms (5% phenyl-methyl 95% dimethyl polysiloxane, 0.25mm x 30 m)

Débit : 1 mL/min

Gradient : 50°C pendant 3 min; Montée à 150°C en 20 min; Montée à 250°C en 7 min

Calibrant : FC43

Echantillons : Huile essentielle diluée 1:500 dans l'éther. Injection de 1 μ L.

Figure 1 – Chromatogramme TIC-GC/MS d'huile essentielle d'écorce de Cannelle (CIN501J105986) analysée sur colonne capillaire

FactorFour VF-5ms (5% phenyl-methyl 95% dimethylpolysiloxane, 0.25mm x 30 m). Les numéros des pics sont reportés dans la Table 1.

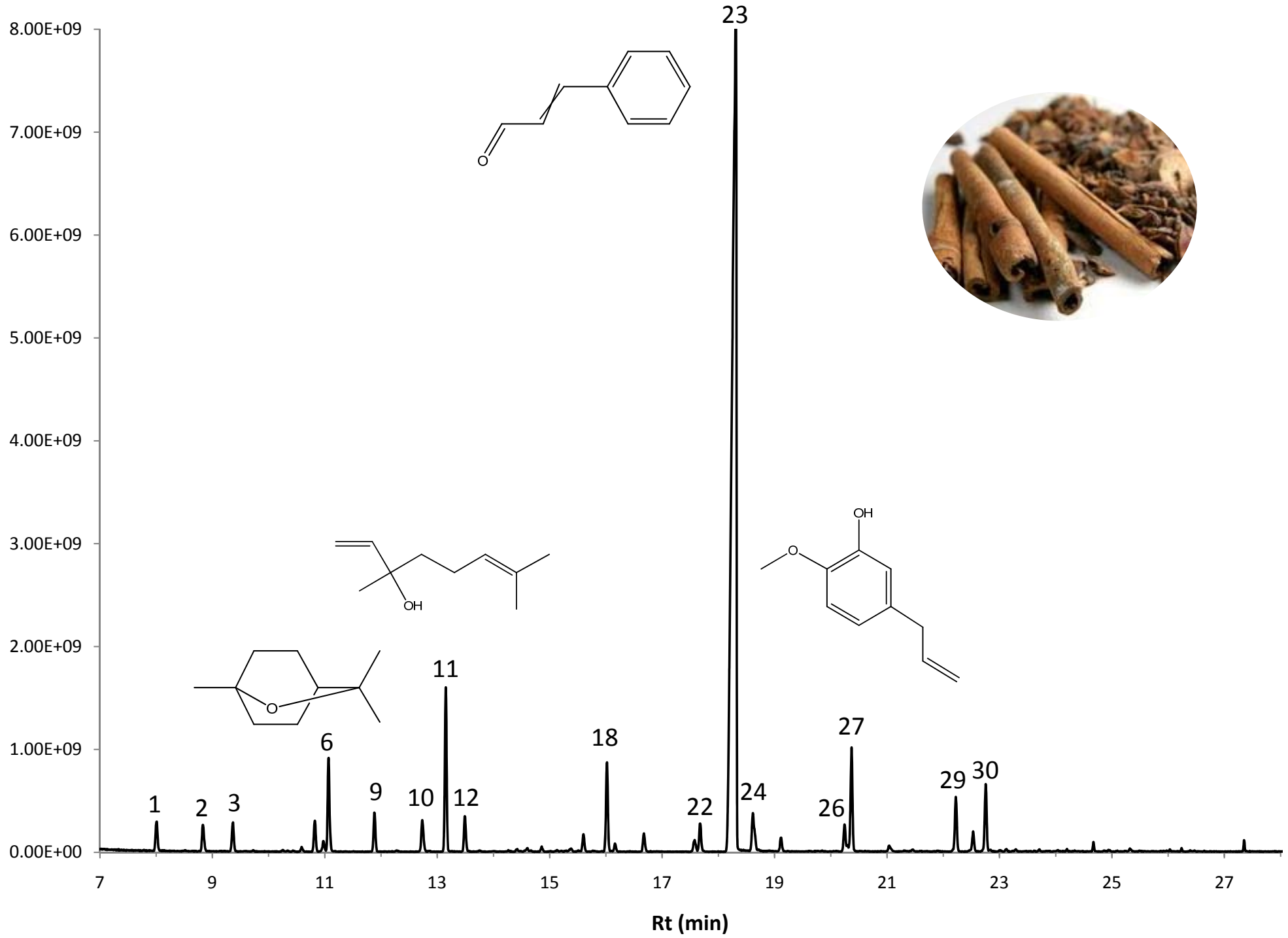


Table 1 – Composition de l'huile essentielle de Cannelle Ecorce (CIN501J105986)

N°	Retention Time (min.)	Area	% of Total	Identification (NIST 08/MassFinder)
1	8.01	6.43E+08	0.9	α -Pinene
2	8.83	6.63E+08	1.0	Benzaldehyde
3	9.37	6.89E+08	1.0	β -Pinene
4	9.93	4.40E+06	0.0	α -Phellandrene
5	10.59	9.00E+07	0.1	2-Carene
6	10.82	7.34E+08	1.1	p-Cymene
7	10.97	2.66E+08	0.4	D-Limonene
8	11.07	2.13E+09	3.1	Eucalyptol
9	11.88	8.80E+08	1.3	γ -Terpinene
10	12.73	8.45E+08	1.2	Terpinolene
11	13.15	3.59E+09	5.2	Linalool
12	13.49	8.50E+08	1.2	β -Phenylethanol
13	13.75	1.88E+07	0.0	β -Fenchol
14	14.42	4.48E+07	0.1	Trans Pinocarveol
15	14.61	5.00E+07	0.1	Camphor
16	14.86	1.10E+08	0.2	Menthone
17	15.60	3.91E+08	0.6	4-Terpineol
18	16.02	2.05E+09	3.0	α -Terpineol
19	16.16	1.77E+08	0.3	γ -Terpineol
20	16.68	4.48E+08	0.7	Cinnamaldehyde, (Z)
21	17.58	3.13E+08	0.5	Neryl Formate
22	17.67	7.05E+08	1.0	β -Phenethyl Acetate
23	18.31	4.44E+10	64.6	Cinnamaldehyde, (E)
24	18.62	1.19E+09	1.7	Trans-Anethol
25	19.11	3.41E+08	0.5	(E)-Cinnamyl alcohol
26	20.25	7.06E+08	1.0	α -Terpinyl Acetate
27	20.37	2.43E+09	3.5	m-Eugenol
28	21.04	1.41E+08	0.2	Neryl Acetate
29	22.22	1.27E+09	1.8	β -Caryophyllene
30	22.53	5.17E+08	0.8	Trans- α -Bergamotene
31	22.76	1.60E+09	2.3	Cinnamyl Acetate
32	23.12	5.60E+07	0.1	α -Humulene
33	23.29	4.89E+07	0.1	(E)-Ethyl Cinnamate
34	24.20	3.72E+07	0.1	Eugenyl Acetate
35	24.67	1.40E+08	0.2	(E)- α -Bisabolene
36	25.32	4.73E+07	0.1	Caryophyllene Oxide
37	27.35	1.38E+08	0.2	Benzyl Benzoate

Table 1 – Composition de l'huile essentielle de Cannelle Ecorce (CIN501J105986)

N°	Retention Time (min.)	Area	% of Total	Identification (NIST 08/MassFinder)
1	8.01	6.43E+08	0.9	α-Pinene
2	8.83	6.63E+08	1.0	Benzaldehyde
3	9.37	6.89E+08	1.0	β-Pinene
4	9.93	4.40E+06	0.0	α -Phellandrene
5	10.59	9.00E+07	0.1	2-Carene
6	10.82	7.34E+08	1.1	p-Cymene
7	10.97	2.66E+08	0.4	D-Limonene
8	11.07	2.13E+09	3.1	Eucalyptol
9	11.88	8.80E+08	1.3	γ-Terpinene
10	12.73	8.45E+08	1.2	Terpinolene
11	13.15	3.59E+09	5.2	Linalool
12	13.49	8.50E+08	1.2	β-Phenylethanol
13	13.75	1.88E+07	0.0	β -Fenchol
14	14.42	4.48E+07	0.1	Trans Pinocarveol
15	14.61	5.00E+07	0.1	Camphor
16	14.86	1.10E+08	0.2	Menthone
17	15.60	3.91E+08	0.6	4-Terpineol
18	16.02	2.05E+09	3.0	α-Terpineol
19	16.16	1.77E+08	0.3	γ -Terpineol
20	16.68	4.48E+08	0.7	Cinnamaldehyde, (Z)
21	17.58	3.13E+08	0.5	Neryl Formate
22	17.67	7.05E+08	1.0	β-Phenethyl Acetate
23	18.31	4.44E+10	64.6	Cinnamaldehyde, (E)
24	18.62	1.19E+09	1.7	Trans-Anethol
25	19.11	3.41E+08	0.5	(E)-Cinnamyl alcohol
26	20.25	7.06E+08	1.0	α-Terpinyl Acetate
27	20.37	2.43E+09	3.5	m-Eugenol
28	21.04	1.41E+08	0.2	Neryl Acetate
29	22.22	1.27E+09	1.8	β-Caryophyllene
30	22.53	5.17E+08	0.8	Trans- α -Bergamotene
31	22.76	1.60E+09	2.3	Cinnamyl Acetate
32	23.12	5.60E+07	0.1	α -Humulene
33	23.29	4.89E+07	0.1	(E)-Ethyl Cinnamate
34	24.20	3.72E+07	0.1	Eugenyl Acetate
35	24.67	1.40E+08	0.2	(E)- α -Bisabolene
36	25.32	4.73E+07	0.1	Caryophyllene Oxide
37	27.35	1.38E+08	0.2	Benzyl Benzoate